

BELZONA PROVIDES SOLUTION TO WATER INJECTION PUMP

CUSTOMER

Sugar Cane Mill in Australia

APPLICATION DATE

1996

APPLICATION SITUATION

Water injection pump

PROBLEM

General erosion/corrosion on pump volute, wear ring seats and stuffing box

PRODUCTS

Belzona® 1311 (Ceramic R- Metal)

Belzona® 1321 (Ceramic S-Metal)

SUBSTRATE

Cast Iron

APPLICATION METHOD

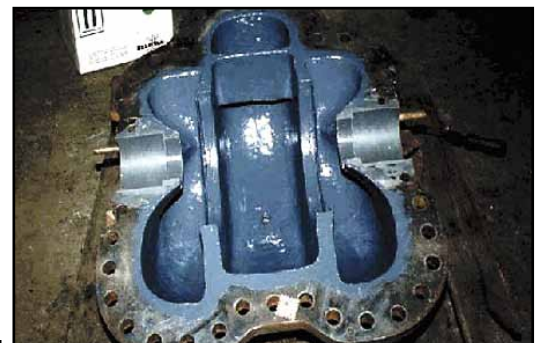
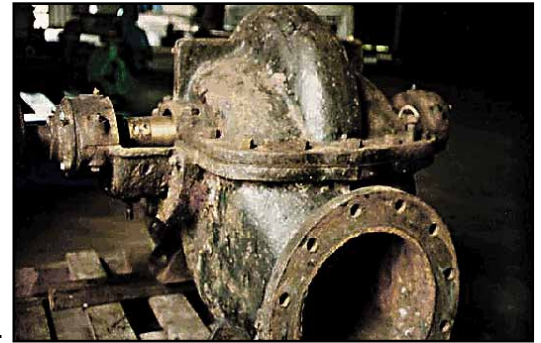
The application was carried out in accordance with Belzona Know-How System Leaflets CEP-1, 2 and 3.

BELZONA FACTS

Water injection pumps are found throughout sugar mills and normally suffer from abrasion, corrosion and/or abrasion.

PICTURES

1. Split casing water injection pump.
2. Rebuilt wear ring seat and stuffing box.
3. Completely refurbished casing.



For more examples of *Belzona Know-How In Action*, please visit <http://khia.belzona.com>



ISO 9001:2008
Q 09335
ISO 14001:2004
EMS 509612

Belzona products are
manufactured under an ISO
9000 Registered Quality
Management System.

UK • USA • Canada • China
www.belzona.com


BELZONA®
Repair • Protect • Improve